

SMYAL

SAFE SPACE TO BE WHO YOU ARE

2006

Annual Report

The Sexual Minority Youth Assistance League

410 7th Street, SE

Washington, DC 20003-2707

Phone: (202) 546-5940 Fax: (202) 544-1306

SMYAL.ORG

Combined Federal Campaign #46119 / United Way Agency #8142

Dear SMYAL Supporter,

On behalf of the SMYAL Board, staff, volunteers, and, most importantly, our youth, thank you for your generous support which has made all of our accomplishments in 2006 possible. In 2006, we provided direct services to more than 350 lesbian, gay, bisexual, transgender, and questioning (LGBTQ) youth and touched the lives of thousands more across the DC metro region through our cultural competency trainings and outreach to community partners.

When I joined SMYAL as Executive Director in April 2007, I was excited to bring my passion for youth work to an organization with such a long and rich history of providing strong programming and support for LGBTQ youth in this community. Looking back on the past year, SMYAL has accomplished much for LGBTQ youth in the DC metro area.

In 2006, LGBTQ youth of the DC metropolitan area accessed our services more than 5,000 times. Through your generous support, we provided a broad range of youth development and health prevention programming through our after-school youth center and special community events.

We continued our HIV prevention work for young men through Brotherhood University and completed our first full year of Ladies Lounge, a support group for young women. We held weekend long leadership retreats for our young men and our young women, and provided free and anonymous HIV counseling, testing, and referral four days a week in our youth center.

For the first time, SMYAL received funding from the Common Ground Fund of the Community Foundation for the National Capital Region to implement a youth organizing program called Rainbow Youth for a Safe Education (RYSE). Through RYSE, our youth work to address the bullying and harassment of LGBTQ youth in our schools.

These examples are just a handful of our many accomplishments this year. We invite you to read on to learn more about how your support has improved the lives of SMYAL youth. We know there is still much work to do, though, before our community becomes a safe space for all LGBTQ youth.

As we prepare for 2008, we have ambitious plans to take our programming to the next level of performance. We are committed to making sure **all** LGBTQ youth in this large metropolitan region knows there is a safe space where they can be themselves at SMYAL.

Again, thank you for your support which makes all that we do possible!

Sincerely,

A handwritten signature in black ink that reads "Tasha Hill". The signature is written in a cursive, flowing style.

Tasha Hill, M.Ed.
Executive Director

Our Mission:

The Sexual Minority Youth Assistance League (SMYAL) is the only Washington, DC metro area service organization solely dedicated to supporting lesbian, gay, bisexual, transgender, and questioning (LGBTQ) youth. Founded in 1984, SMYAL is a 501 (c) (3) nonprofit organization.

Our mission is to promote and support self-confident, healthy, productive lives for LGBTQ youth as they journey from adolescence into adulthood. To fulfill our mission, we concentrate our commitment and energy on five focus areas: (1) Life Skills & Leadership Development, (2) Counseling & Support, (3) Health & Wellness Education, (4) Safe Social Activities, and (5) Community Outreach and Education.

Our History:

Local community activists founded SMYAL in 1984 in response to the incarceration of several young gay men in St. Elizabeth's Psychiatric Hospital for exhibiting effeminate behavior. SMYAL originally operated as a referral service, linking youth and families to supportive professionals. SMYAL's founders soon realized the importance of reducing the sense of isolation so many LGBTQ youth felt, and so formed SMYAL's first weekend support groups to provide a safe space for youth to interact with others like them. Since then, SMYAL has grown considerably, first by expanding into a daily after-school program with a staff of youth work professionals and, in 1997, by purchasing two adjacent row houses on Capitol Hill that serve as our offices and Youth Center.

Our Youth:

For many young people, SMYAL is the only place where they can openly and safely be their whole selves. LGBTQ youth continue to face abuse in their homes, schools, and their communities. Constant harassment and rejection have a devastating effect on the self-esteem of LGBTQ young people, often leading them to make unsafe decisions about their health and future. Recent social research consistently shows that LGBTQ youth are at greater risk than their heterosexual peers for many negative health outcomes, including HIV infection, substance abuse, and suicide.

Many of our youth come from low-income families and over 90% are African-American. Our young people face additional challenges due to the negative effects of racism in our culture coupled with the lack of opportunities for low-income youth. All too often, our youth are overwhelmed by the harassment in their schools and have dropped out before earning their high school diploma, making gainful employment difficult to find and a college education impossible.

Fortunately for youth in the Washington, DC metropolitan area, hope exists. In 2006, we provided services to more than 350 youth in our after-school Youth Center and at special events in our community. Through our high-impact programs, our young people learn to make healthy decisions and develop the skills they need to succeed as adults.

After-School Youth Center:

SMYAL provides a broad range of activities and services to LGBTQ youth in the D.C. metro area through our after-school Youth Center located on Capitol Hill. Our programs include:

Individual and Group Counseling:

Our Licensed Clinical Social Worker gives youth the support they need to make healthy decisions and build positive self-images.

Brotherhood University:

SMYAL staff developed Brotherhood University in response to the lack of an HIV Prevention curriculum for young gay and bisexual African-American men. This six-session group-level intervention educates these young men about HIV and builds community and self-responsibility.

Ladies' Lounge:

In 2005, SMYAL implemented Ladies' Lounge, a support group designed for young lesbian and bisexual women. SMYAL staff and volunteers worked together to create a program that would educate these young women about safe sex, substance abuse, healthy relationships, and other topics.

Rainbow Youth for a Safe Education:

Rainbow Youth for a Safe Education (RYSE) is a youth organizing program that trains LGBTQ youth to address and prevent the bullying and harassment of LGBTQ youth in DC public schools.

Substance Abuse Education:

We have implemented a proven effective Substance Abuse and Mental Health Resource Administration (SAMHSA) model called "Project Toward No Drug Abuse" (TND). This highly interactive program helps youth develop coping skills and self-control training.

HIV Testing, Counseling and Referral:

Our licensed HIV Counselor and Tester provides free and anonymous HIV counseling, testing and referral at our Youth Center four days a week. Through a collaboration with Children's National Medical Center, our Care Advocate connects HIV-positive youth to the care they need.

In the Community:

In 2006, SMYAL impacted the lives of thousands of LGBTQ youth who are not able to reach our Youth Center through our community outreach program.

Training and Community Education:

SMYAL is dedicated to serving LGBTQ youth wherever they are, including other youth service agencies and systems. We offer LGBTQ youth cultural competency workshops for youth service professionals in schools, emergency housing facilities, and other agencies.

"Working it Out" in Maryland Schools:

Through a grant from the Maryland Department of Health, SMYAL provides the "Working it Out" Curriculum to students in Maryland public schools. "Working It Out" is an intervention for LGBTQ youth that works to reduce high-risk behavior in LGBTQ youth by addressing the feelings of isolation and low self-esteem common in this population.

2006 Highlights

- Throughout 2006, SMYAL provided **ongoing individual counseling to 91 LGBTQ youth** and provided LGBTQ youth **cultural competency training to 1,050 youth service professionals**.
- SMYAL collaborated with the Human Rights Campaign, the National Youth Advocacy Coalition, and the National Black Justice Coalition to hold “**Confronting the Crisis,**” a **community forum to discuss the issues facing LGBTQ youth living in the District of Columbia**. The forum, hosted by the Human Rights Campaign in their Equality Forum, featured speeches by community activists, SMYAL youth, and DC mayoral candidates. In conjunction with the April 2006 event, SMYAL released a special report also called *Confronting the Crisis*, which identified several major areas of need and proposed action steps to improve the lives of our young people.
- In **August 2006**, SMYAL held **Brothers United in Leadership Development (BUILD), a weekend long leadership retreat for young gay and bisexual African-American men**. Fifteen young men completed the training, which included workshops on life skills building and leadership development and featured guest speakers from the adult gay and bisexual male community, who spoke about their careers in the nonprofit, business, and government fields.
- SMYAL held a **Substance Free Luau in September 2006** sponsored by the DC Government Department of Health. Forty-five youth attended the event, which featured games, prizes, and food along with activities designed to educate youth about the harmful effects of alcohol, tobacco, and illegal drugs and empower them to make positive choices for the sake of their health and wellbeing.
- SMYAL held its **first ever Ladies’ Lounge retreat in October 2006 for lesbian, bisexual, and questioning young women**. Nine young women attended and participated in workshops facilitated by adult mentors from the lesbian and bisexual community. Topics included spirituality, creativity, healthy relationships, and conflict resolution.
- In **October 2006**, SMYAL was one of **twenty-nine organizations in the country to receive a five-year grant from the Centers for Disease Control and Prevention (CDC)**. This federal grant will enable SMYAL to provide the proven effective HIV intervention “Many Men, Many Voices” to young gay and bisexual men of color in the DC metro area.
- In **November 2006**, more than **400 supporters attended the 9th Annual Fall Brunch at the Renaissance Mayflower Hotel in Washington, DC**. The event featured speeches by Darlene Nipper, former Director of the Mayor’s Office of LGBT Affairs, and Wayne Besen, founder and Executive Director of Truth Wins Out. NBC4 Meteorologist Chuck Bell served as Master of Ceremonies. **The 2006 Fall Brunch was our most successful ever, bringing in more than \$75,000 in support, in addition to a special \$50,000 donation from Freddie Mac!**

Statement of Financial Position: Dec. 31, 2006 and 2005

	2006		2005
Assets			
Cash and cash equivalents	\$ 170,247	\$	113,481
Grants and contributions receivable	113,657		132,552
Prepaid expenses and other assets	9,206		16,463
Property and equipment, net	<u>295,050</u>		<u>306,455</u>
Total assets	\$ 588,160	\$	568,951
Liabilities and Net Assets			
Liabilities			
Accounts payable and accrued expenses	\$ 32,552	\$	70,378
Refundable advances	9,558		3,065
Mortgage payable	<u>212,356</u>		<u>225,767</u>
Total liabilities	254,466		299,210
Net Assets			
Unrestricted	315,340		150,158
Temporarily restricted	-		101,229
Permanently restricted	<u>18,354</u>		<u>18,354</u>
Total net assets	333,694		269,741
Total liabilities and net assets	\$ 588,160	\$	568,951

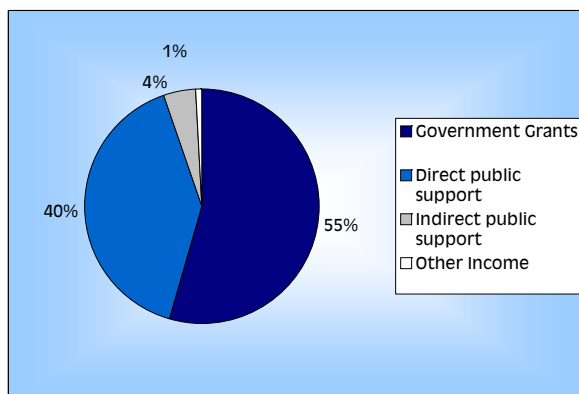
Statement of Activities: For the Year Ended December 31, 2006

	Unrestricted	Temporarily Restricted	Permanently Restricted	Total
Revenue and Support				
Government grants	\$ 553,918	-	-	553,918
Direct public support	271,718	96,399	-	368,117
Indirect public support	42,052	-	-	42,052
Interest income	99	-	-	99
Miscellaneous income	1,656	-	-	1,656
Net assets released from restrictions:				
Satisfaction of program restrictions	<u>197,628</u>	<u>(197,628)</u>	-	-
Total revenue and support	1,067,071	(101,229)	-	965,842
Expenses				
Program services	691,605	-	-	691,605
Management and general	139,870	-	-	139,870
Fundraising	<u>70,414</u>	-	-	<u>70,414</u>
Total expenses	901,889	-	-	901,889
Changes in Net Assets	165,182	(101,229)	-	63,953
Net Assets, beginning of year	150,158	101,229	18,354	269,741
Net Assets, end of year	\$ 315,340	-	18,354	333,694

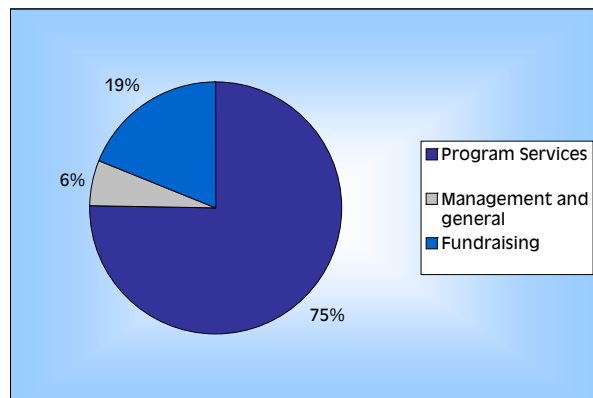
Statement of Activities: For the Years Ended Dec. 31, 2006 & 2005

	2006	2005
Cash Flows from Operating Activities		
Change in net assets	\$ 63,953	\$ 111,684
Adjustments to reconcile change in net assets to net cash provided by operating activities:		
Depreciation	15,245	14,846
Change in operating assets and liabilities:		
Decrease in grants and contributions receivable	18,895	3,662
Decrease (increase) in prepaid expenses and other assets	7,257	(11,953)
(Decrease) increase in accounts payable and accrued expenses	(37,826)	837
Increase (decrease) in refundable advances	6,493	(38,185)
Net cash provided by operating activities	74,017	80,891
Cash Flows from Investing Activities		
Purchases of furniture and equipment	(3,840)	(25,300)
Net cash used in investing activities	(3,840)	(25,300)
Cash Flows from Financing Activities		
Repayment of principal under mortgage payable	(13,411)	(12,695)
Net cash used in financing activities	(13,411)	(12,695)
Net Increase in Cash and Cash Equivalents	56,766	42,896
Cash and Cash Equivalents, beginning of year	113,481	70,585
Cash and Cash Equivalents, end of year	\$ 170,247	\$ 113,481
Supplemental Information		
Interest paid	\$ 12,082	\$ 12,795

Revenue



Expenses



Leadership Circle

Sponsor

Christopher Bailey, Craig A. Bowman, Robert Cannon, Dennis Chong, Jerry N. Clark, Ulrika Coburn, Edward J. Coltman, Richard A. Couch, Larry D'Angelo, Karen Davis, Richard A. Davis, Gregory Doepker, Jonathan Doster, Edward F. Dube, Paul C. Ehrlich, Alan Eisen, David Feldman, Whit Fletcher, Joseph A. Forti & William Roman, George Freeland, Jeffrey Gabardi, Seth Galanter, Gerrald J. Gantt, Christina M. Gattuso & Deborah Redmond, Antonio Gomez, Gregory L. Greeley, J. Robby Gregg, Joi Grieg, Charles Brian Grove, Joseph Hallett, Lois Hanbury, Deborah & Sam Hastings-Black, Joseph Herr, Barry Johnson, Lennox E Joseph, Peter Kazon, L. Charles Keller, Arthur B. Kennickell, Mary A. Kiernan-Stern, Eric Y. Korpon, Joseph LaFleur, Robert Leidich, Kenneth E. Nickels, Eric P. Reader, Jerry L. Rehm, Terry Reynolds, Larry Rood & Leah Curry-Rood, Kevin Shirley, James Showen, Marty K. Smith, Louis B. Snider, Reuben Snipper & Cheryl Morden, Richard Sorian, Roger D. Sucharski, Mario Sylvia, Wesley Thomas, Erich Veitenheimer & Andrew Carias, Robert J. Veltkamp, Kenneth Weeden, Jeffrey White, Martin C. Yerg & Tu Anh Bui, Peter Zorn.

Mentor

Beverly Saunders Biddle, Jeff Cohen & James Ciba, Susan Crown, Anthony Q. De Santis, Kevin Dilallo, Elaine Feehrer, Peter Hill, Mark Hunker, Donald L. Jones, Heather Kaye, Jack Krumholtz, David O. McCall, Patrick McClure, James A. McGlade, Graham N. Murphy, Robert Murphy & Fred Steckler, Luis Padilla, Edward Palmieri, Woody Peterson, Mark L. Plant, Scott Reiber & Bishop Rusty Smith, Leslie Schafer & Tasha Hill, Russell D. Roybal, Brian J. Scott, Murat Sor, Michael Sosso, Lawrence G. Turner Trust, Barbara A. Uhler, Patrick Vanas, Caroline C. Willis.

Year-Round Champion

Adrian Ballard & Edward Jackson, Christopher Dyer, Octavio Espinal, Darrin Glymph, Chuck Goldfarb & Bo Hong, Darryl G. Gorman, Anthony J. Hain, Everett Hamilton, Jr., Eric Lamar, Patrick Moloughney, James Noble, Betsy Pursell & Schroeder Stribling, Danny Reed, William H. Sawicki, David Swanson & Bruce Frishman, Hank Tomlinson, Richard A. Van Berkel & Bruce Karp, Bruce R. Weiss, Kathi Westcot.

Advocate

Dierck Casselman & Scott Van Hove, A. Steven Clay, Steven A. Elmendorf, Jak Kesterson & Yahen Gasca, Todd R. Peterson, William F. Quinn.

Leader

Douglas Armstrong & Steve Dobberowsky, Dennis Black, Kerwin C. Diggs, Jeffrey C. Nelson & Rob Cogorno, Mike Schwartz & Carl Menninger, Ellen Sudow & Joe Higdon.

Corporate and Foundation Giving

Aetna Foundation, AOL, AT&T, Atlantic States Gay Rodeo Association, Be Bar, BJS Properties, Brother Help Thyself, Capital Area Rainrowlers Association, Capital One, Capital Tennis Association, Caplin & Drysdale, Chartered, Catawamteak Fund of DC of the Community Foundation for the National Capital Region, Christ Congregational Church, Cobalt, Common Ground Fund of the Community Foundation for the National Capital Region, DC Children & Youth Investment Trust, Dupont Title & Settlements, LLC, Falls Church Yoga, Fannie Mae Foundation, Freddie Mac Community Relations Donor Assisted Fund of the Community Foundation for the National Capital Region, Freddie Mac Foundation, Haaland Production & Consulting, HALO, Human Rights Campaign Foundation, International Monetary Fund, Jeffrey D. Bender Foundation, JR's Bar & Grill, Kaiser Permanente, KPMG Washington Foundation, Leather Rack, Morrison Foerster Foundation, Remington's, Rocking Moon Foundation, RTI International, St. Thomas Parish, Inc., Starbucks Memorial Fund, SunTrust Bank, Tim Coburn Photography, Tomlinson Pharmacy, Inc., Patrick Vanas Events, Verizon Foundation, Verizon Wireless, *The Washington Blade*, Weissberg Foundation, Wellpoint Foundation, World Bank Community Connections Fund, Youth Pride Alliance.